

Accident Report  
Collision with Submerged Object  
*Black Diamond*  
28 July 2006  
Summary Report



# NARRATIVE

At approximately 1330 hours on Friday 28 July, **Black Diamond** departed its berth at Lyttelton for an afternoon sightseeing cruise. There were 22 passengers, a Skipper and a Crewmember on board.

The weather was excellent; there was no wind, flat calm sea, blue skies and very good visibility. Low water was at 1242 hours at a height of 0.6 metres above chart datum.

The Skipper followed his usual passage around the harbour and gave a commentary as he went (See *Figure 1 - Approximate track of Black Diamond*). As they reached the Heads, they crossed to the other side of the Heads, as it was a good area to sight dolphins.

The Skipper lined his bow up with the charted 26 metre rock located east of Beacon Rock (See Figure 1). As he approached he commenced a turn to starboard. The vessel's speed was about 13-14 knots. The vessel was about 80-100 metres off the reef situated at the end of the 26 metre rock and in 15 metres of water when the Skipper and passengers heard two consecutive thuds. The Skipper then felt a vibration coming from the port engine shaft and propeller. He immediately stopped the port engine.

The Skipper assessed that the vessel was clear of all dangers. He stopped the vessel and checked all void spaces. There was no ingress of water. He explained what had happened to the passengers and that they would proceed back to port on one engine. The passengers remained calm throughout the incident.

When the vessel returned to port the passengers disembarked. The vessel was then slipped. It was found that **Black Diamond** had sustained serious damage to the port propeller (See *figure 2*), rudder, shaft and engine.

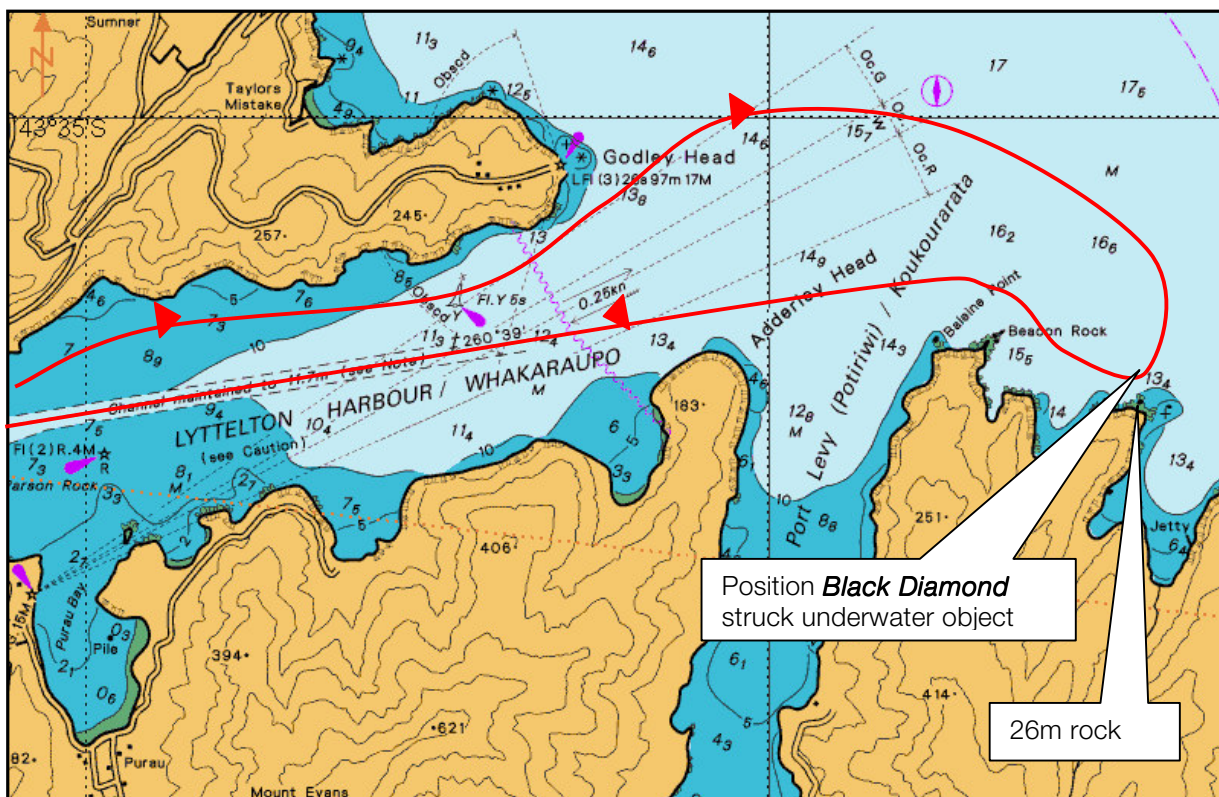


Figure 1

Chart extract from Land Information New Zealand (LINZ) chart NZ 6321 showing the approximate course of **Black Diamond**



**Figure 2**  
Port propeller

## FINDINGS

It is not known what ***Black Diamond*** struck. It may have been a submerged log, or other objects. The Skipper did not visually sight anything before or after striking the object. There was no disturbance on the surface of the water to indicate the presence of any underwater reef or rock close to the surface.

The absence of any damage to the hull of the vessel coupled with the under keel clearance at the time of the accident is indicative of the vessel having struck an unknown floating object.