



# Accident Report

*Lois R*

Grounding on the Kaipara  
Harbour on 12 July 2005

Class C



## NARRATIVE

During the night of 11 July 2005, the wind changed from north east to south west. At 0400 hours, the wind increased in strength to 30-40 knots.

The Skipper of *Lois R*, a hire/reward vessel with an overall length of 9.94 metres, heard the chain on the anchor rattling, but did not investigate.

At 0430 hours, *Lois R* grounded. The Skipper attempted to motor off but damaged the propeller on the rocks.

The Skipper contacted Auckland Coastguard on VHF and advised them of the situation.

*Lois R* was being pounded on the rocks as the anchor was not holding.

Locals in the area assisted the Skipper in getting tyres under the hull of the vessel in an effort to prevent more damage occurring before the tide rose enough to allow *Lois R* to come off the rocks.

At 0830 hours, using a Danforth anchor and nylon rope on the vessel's winch, the vessel came off the rocks. No water was observed entering the vessel which was anchored until it could be slipped at Tinopai at 1500 hours.



The owner of *Lois R* stated when he reported the accident to Maritime New Zealand, he had spent nearly three hours on 11 July with the Skipper instructing him on the operation of the vessel. This included getting the Skipper to anchor, coming alongside the wharf and utilising the safety equipment on board. The owner stated that the confidence shown by the Skipper at the time, led him to believe he had more experience than was displayed later.

The Owner further stated that before the Skipper took over, he explained to him that rough weather was expected and suggested an alternative safe anchorage. However, the Skipper saw on the chart the camping ground in Komiti Bay at Tinopai and decided to anchor there overnight.

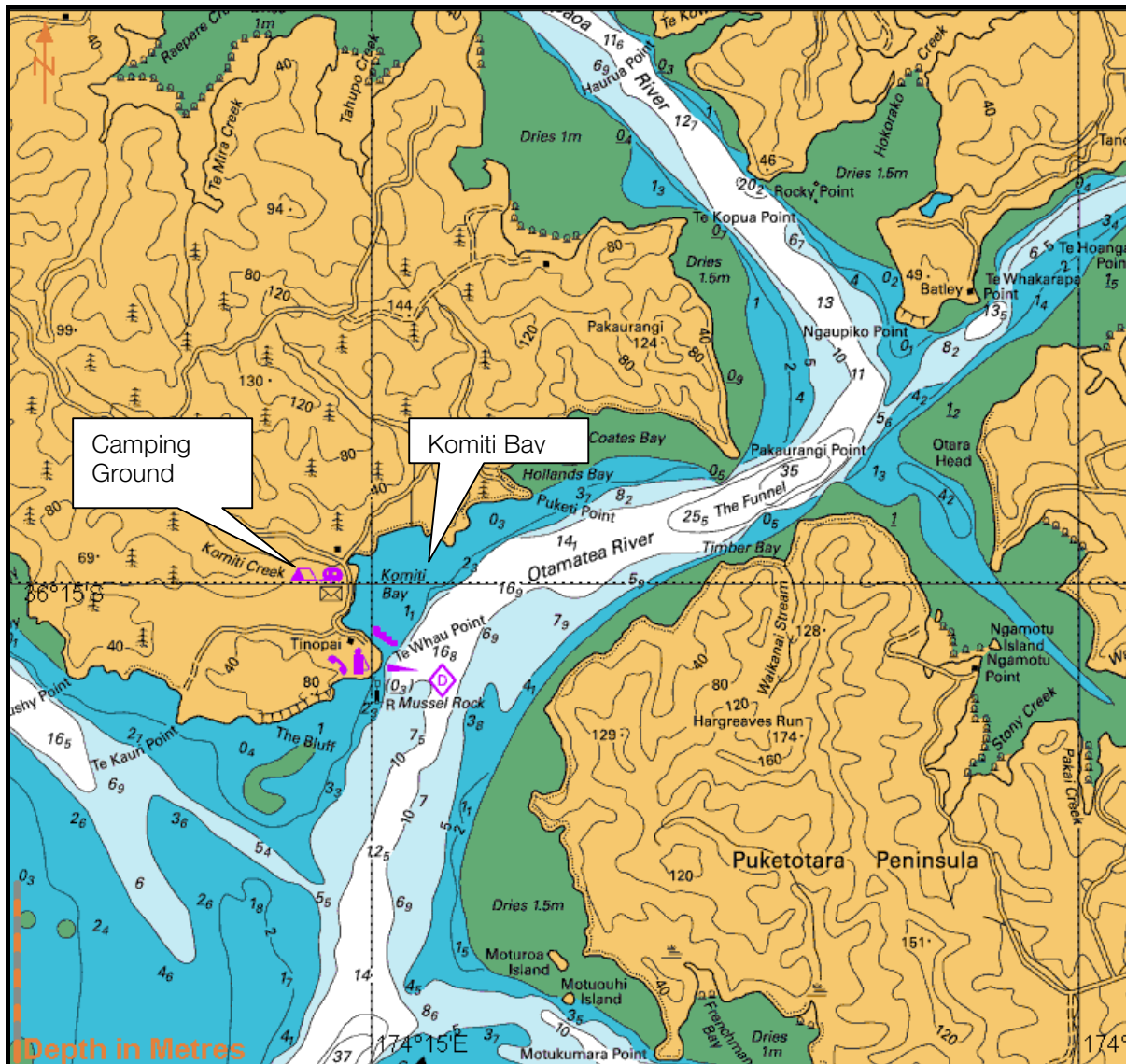


Figure 1 – Extract of Chart NZ4265

## LESSONS LEARNED

- The need to choose a safe anchorage, particularly when bad weather is forecast.
- The importance of keeping an anchor watch, particularly in bad weather.
- Adherence to experienced advice where local knowledge of the Skipper/crew is limited or non-existent.

