

# Pollution Prevention

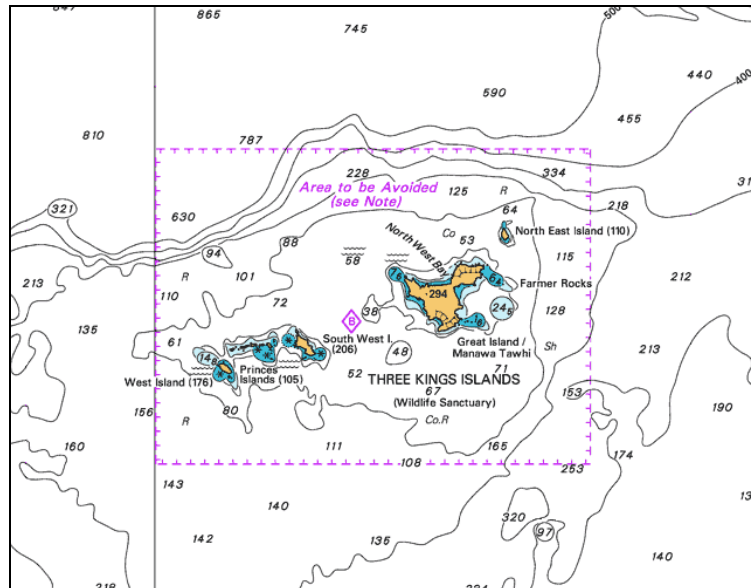
## SHIPPING ROUTEING – AREAS TO BE AVOIDED

### Three Kings Islands

- (1) 34° 06'. 00 S 172° 00'. 00 E
- (2) 34° 06'. 00 S 172° 12'. 50 E
- (3) 34° 13'. 50 S 172° 12'. 50 E
- (4) 34° 13'. 50 S 172° 00'. 00 E



The Three Kings Islands, situated off the northern tip of the North Island, were declared as a Wildlife Sanctuary in 1995. The area is protected to avoid the risk of pollution and damage to the environment from ships of 500 gross tons or more.



### Poor Knights Islands

- (1) 35° 51'.30S 174° 35'.50E
- (2) 35° 34'.55S 174° 49'.20E
- (3) 35° 29'.60S 174° 50'.80E
- (4) 35° 24'.70S 174° 50'.20E
- (5) 35° 10'.20'S 174° 20'.10E



The extended area around the Poor Knights Islands, situated off the North-East coast of the North Island, were identified as an area to be avoided in 2003. This area incorporates a marine reserve close to the islands. It is protected to avoid the risk of pollution and damage to the environment from ships of 45 m overall length or more.

