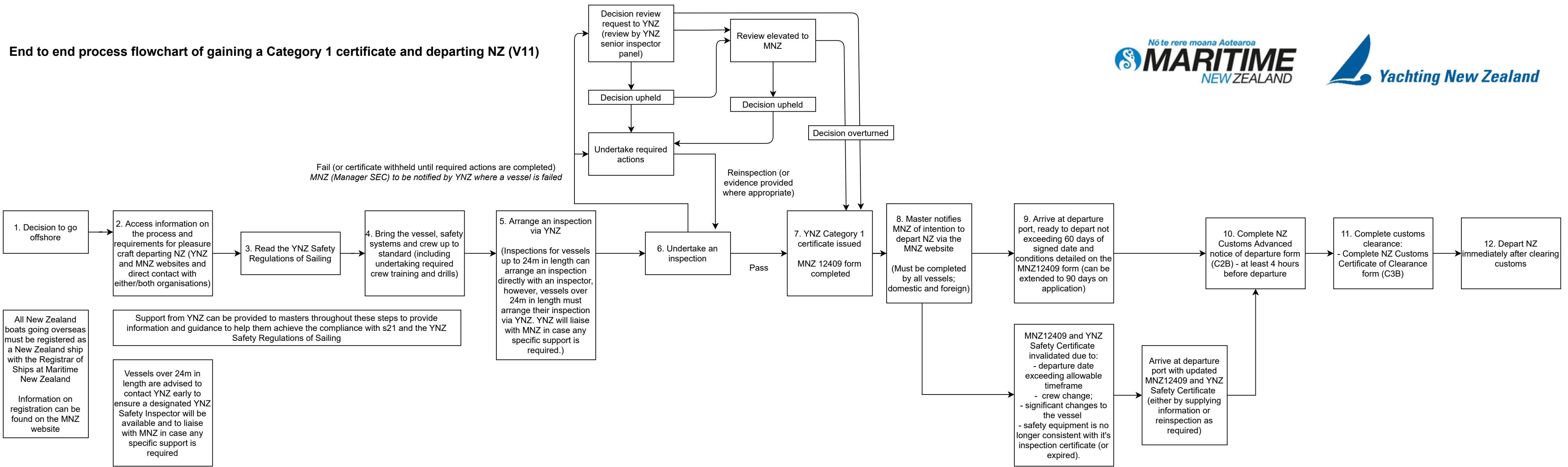


End to end process flowchart of gaining a Category 1 certificate and departing NZ (V11)



All New Zealand boats going overseas must be registered as a New Zealand ship with the Registrar of Ships at Maritime New Zealand

Information on registration can be found on the MNZ website

Support from YNZ can be provided to masters throughout these steps to provide information and guidance to help them achieve the compliance with s21 and the YNZ Safety Regulations of Sailing

Vessels over 24m in length are advised to contact YNZ early to ensure a designated YNZ Safety Inspector will be available and to liaise with MNZ in case any specific support is required