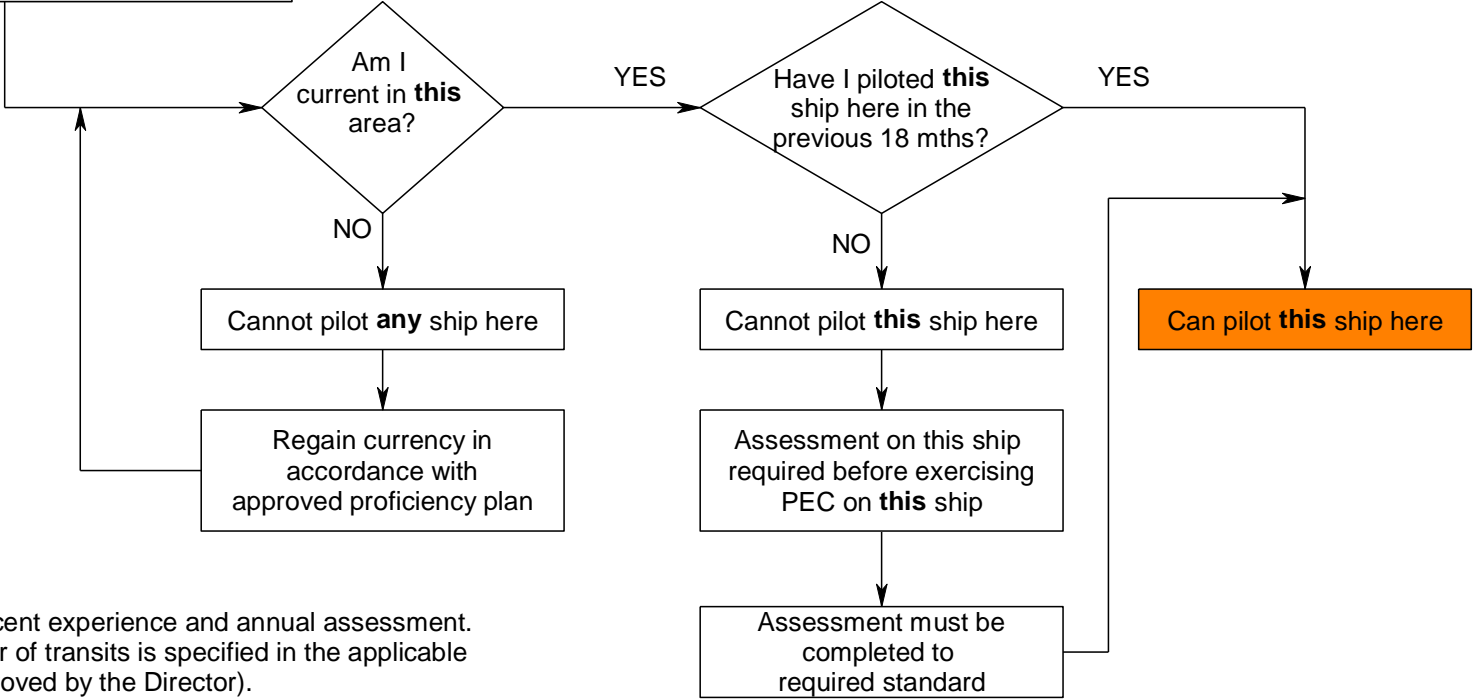


Case 1

MAINTAINING CURRENCY ON MULTIPLE SHIPS IN A PILOTAGE AREA

ASSESS CURRENCY
Consider:
- Multiple ship endorsements
- Include all transits and annual assessments
- Harbourmaster to confirm
See NOTE 1



NOTE 1:
Currency includes recent experience and annual assessment. The minimum number of transits is specified in the applicable proficiency plan (approved by the Director).